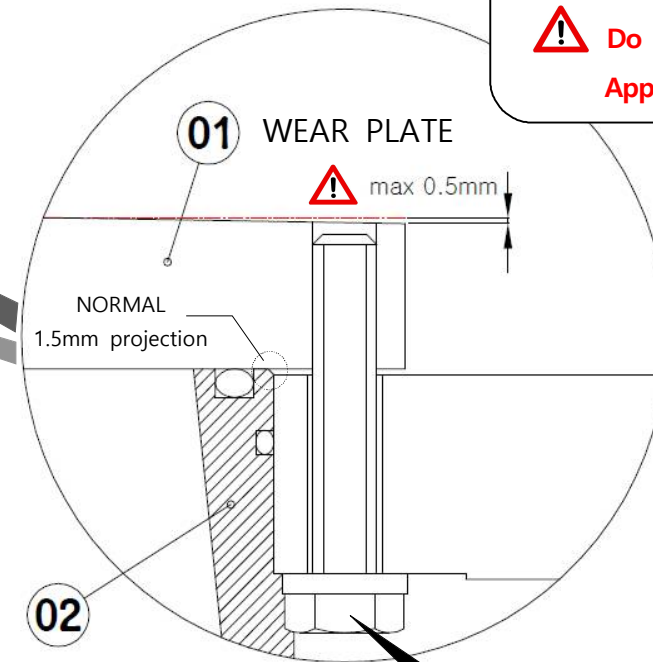
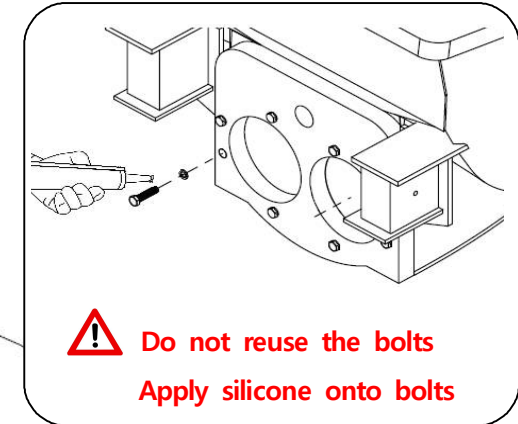
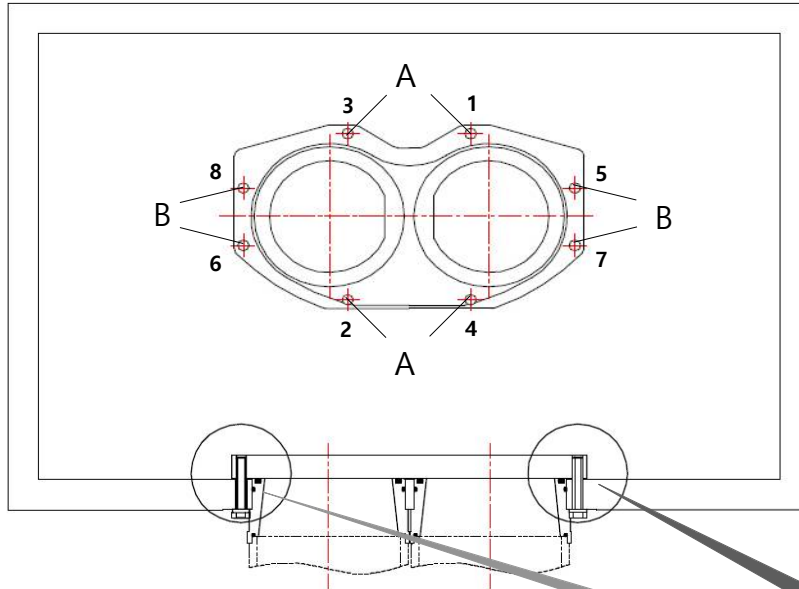


## Hopper wear plate assembly information



- Fix B bolt only tightened by hand
  - Tighten A bolt in order as standard torque value
  - Tighten B bolt in order as standard torque value
- ⚠ Not over 0.5mm twisted after fixing B bolt**

CONNECTING RING

BOLT SPEC : M16 X 2.0(10.9T)

**1~8 BOLT TORQUE : 60N.m = 6Kg.m**

**CAUTION I. Apply the same torque on both STD WEAR PLATE, BIG MOUTH WEAR PLATE.**